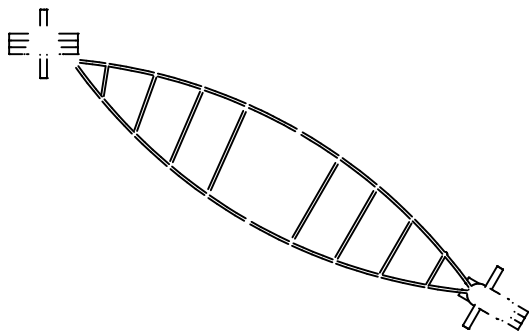


# Arrangement of the mounting holes (foundation blocks)



Notes for the assembly

The order of assembly

# CRQVHDWLRQ DQG FRQWUROHOF R AFFRUGLQJ HW R1 W 1 R U P

The conservation:

It is required to consult the device producer about all maintaining works of the devices parts which are under guarantee.

Wood is an organic and natural material, which requires annual preservation. Suggested wood preservative for wooden elements is the one that contains teflon. Suggested colour - TEAK . Saturate according to the instruction of the product.

Damaged paint coats should be first cleaned out of dust, fat and the corrosion centres.

After that, the cleaned surface should be double covered with an acrylic-polyester steel paint.

The colour combination used by BUGLO:

- 1) Grey - RAL 7035
- 2) Yellow - RAL 1021
- 3) Blue - RAL 5015
- 4) Red - RAL 3000
- 5) Green - RAL 6018
- 6) Black - RAL 9005
- 7) Violet - RAL 4004

All paint stains/marks created on metal elements and polyethylene plates by spray paints and oil felt-tip pens can be

removed through wiping with a fabric soaked in NITRO solvent.

Recommendations for the equipment control according to the EN 1176-7: 2009-Norm. Playground equipment and the surfaces part 7: Guidelines for the assembly, control, conservation and exploitation/running.

1) The periodic inspection - if the device is used very intensely or it is exposed to the vandalism, the control should be carried out once a week or more often.

The periodic control includes:

- checking the construction stability
- completing of all equipment parts
- checking if there are no cracks, sharp edges or other damages
- the cleanliness around the equipment (broken glass determines a big danger)
- smoothing the safe surface

2) The internal control - it should be carried out once every three months.

It includes the range of the periodic inspection. In addition, the device functions must be checked.

The internal control includes:

- the examination (the closers and masking covers must be completed)
- checking if the pipes/piles are stable
- checking the safe powdery surface and evening it out. (if the level is over 10 cm below the right ground surface level, it must be replenished)
- tighten all screws and cables (through rotation; only if there are cables in the product)

3) The internal control and the main control - they must be carried out once a year (compulsory)

- checking the construction stability
- checking and reconstructing anti-corrosion coating that was damaged
- checking the foundation state
- checking the safe powdery surface and evening it out (if the level is over 10 cm below the right ground surface level, it must be replenished)